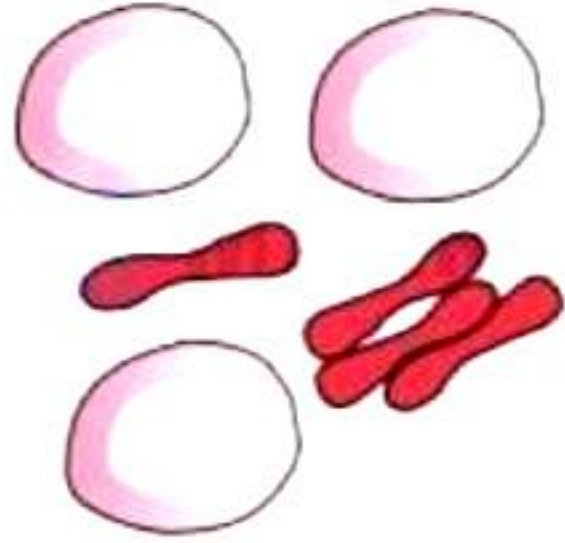


# Cell - The Unit of Life

---

## Set – 1

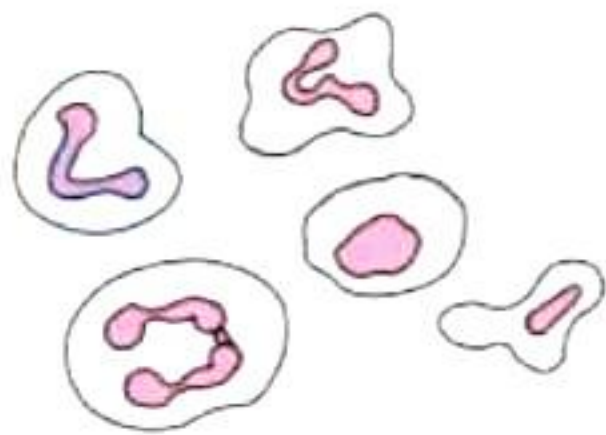
Q1. Select the correct name of the diagram.



- A. RBCs
- B. WBCs
- C. Columnar Cells
- D. Mesophyll Cells

Ans. (A)

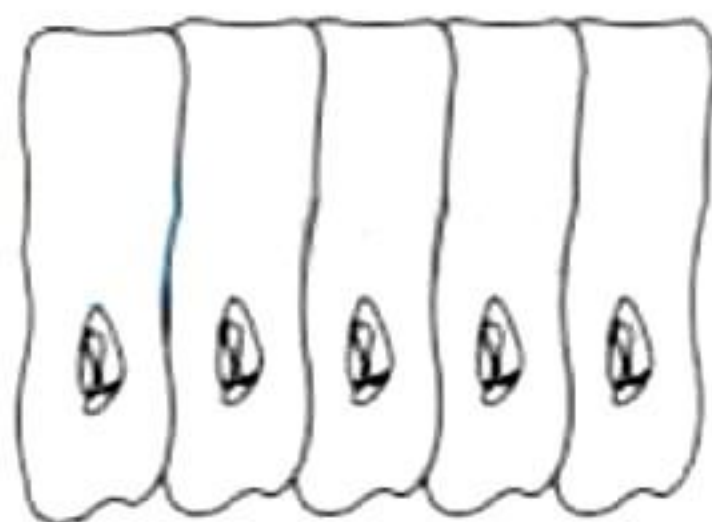
Q2. Select the correct name of the diagram.



- A. RBCs
- B. WBCs
- C. Columnar Cells
- D. Mesophyll Cells

Ans. (B)

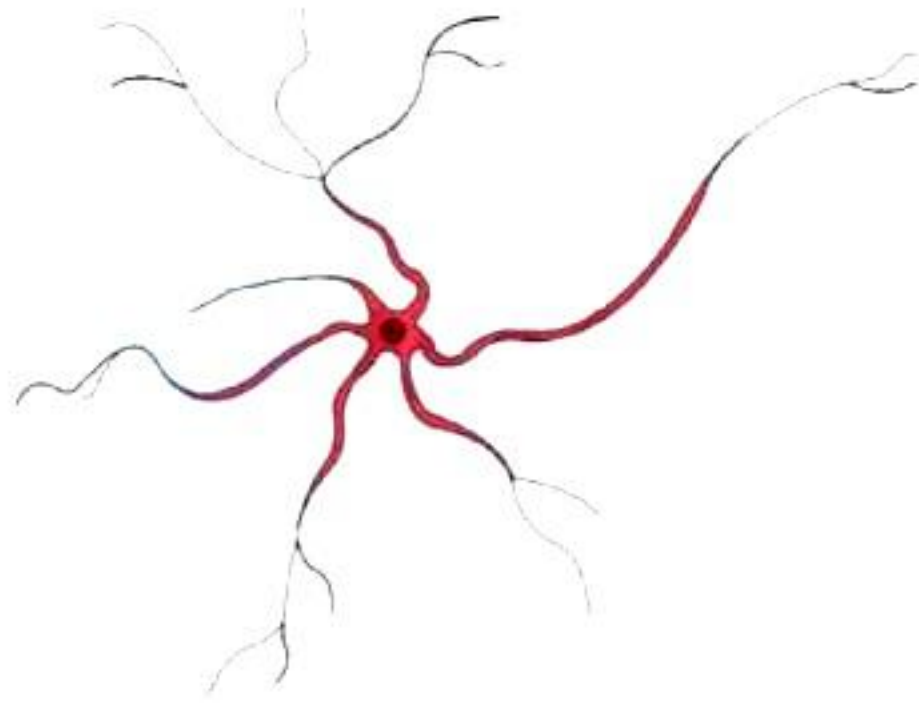
Q3. Select the correct name of the diagram.



- A. RBCs
- B. WBCs
- C. Columnar Cells
- D. Mesophyll Cells

**Ans. (C)**

**Q4. Select the correct name of the diagram.**



- A. Columnar Cells
- B. Mesophyll Cells
- C. Nerve Cells
- D. RBCs

**Ans. (C)**

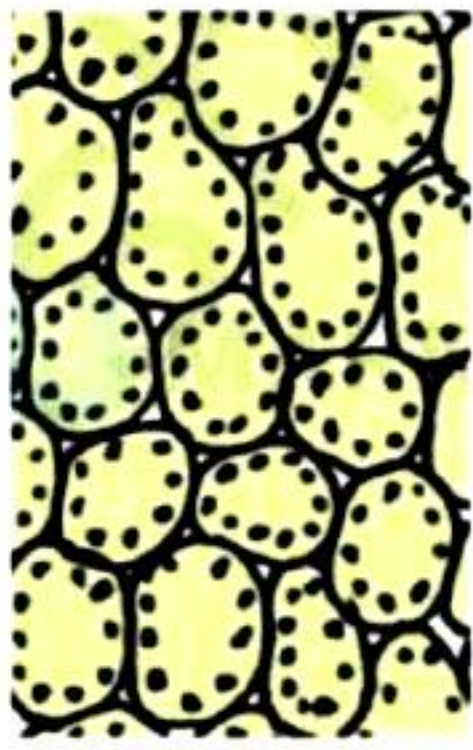
**Q5. Select the correct name of the diagram.**



- A. Columnar Cells
- B. Mesophyll Cells
- C. Nerve Cells
- D. Tracheid

**Ans. (D)**

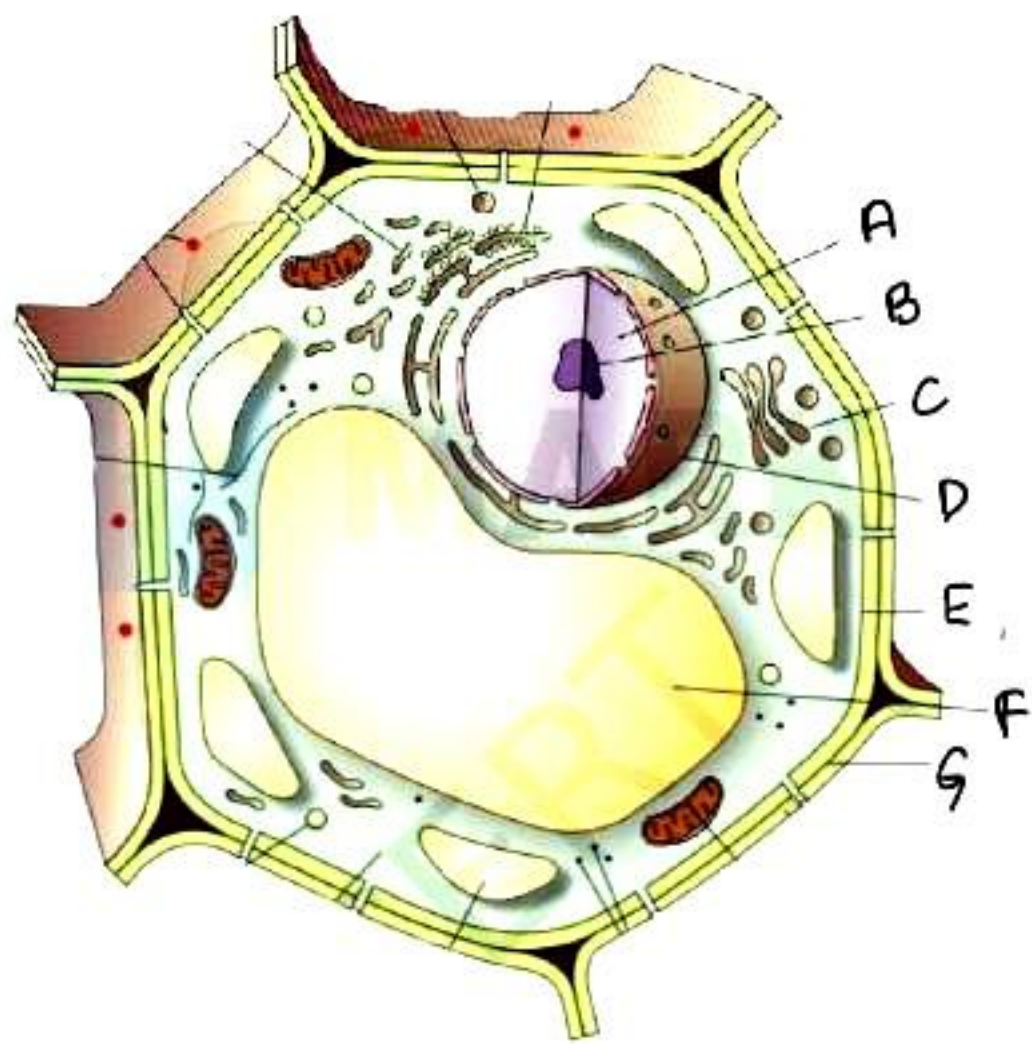
Q6. Select the correct name of the diagram.



- A. RBCs
- B. WBCs
- C. Columnar Cells
- D. Mesophyll Cells

Ans. (D)

Q7. Select A, B, C, D, E, F, G from the following Diagram.

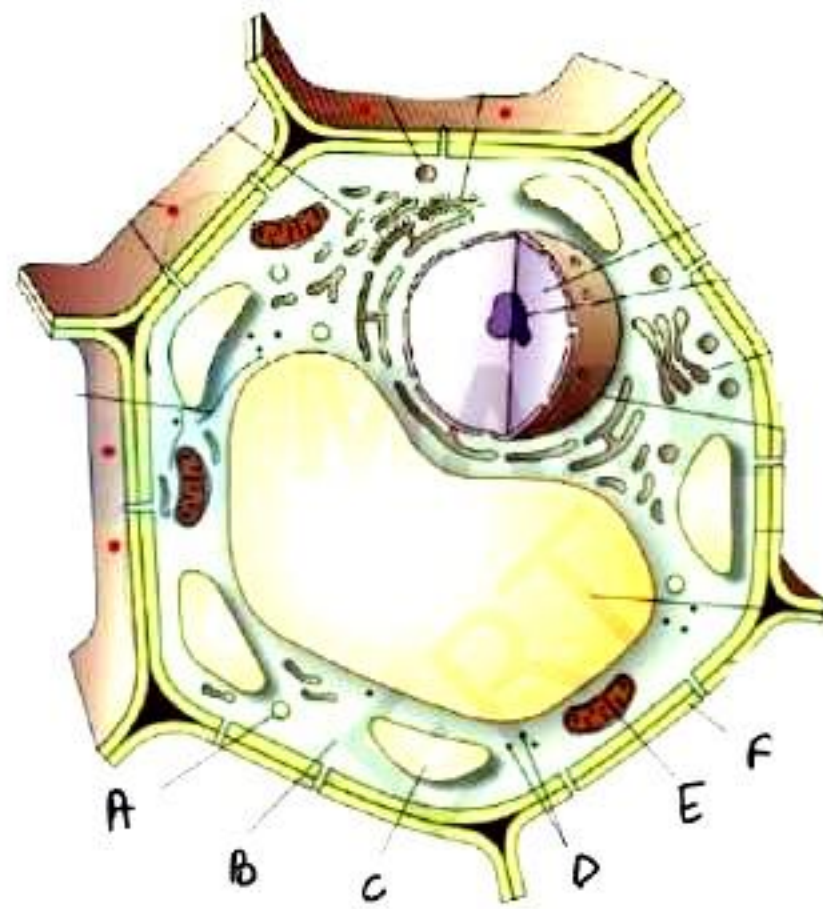


- A. RER, Nucleus, Golgi Body, Nuclear Envelope, Plasma Membrane, Vacuole, Middle Lamella
- B. Nucleus, Golgi Body, Nuclear Envelope, Plasma Membrane, Vacuole, Middle Lamella, RER
- C. Golgi Body, Nuclear Envelope, Plasma Membrane, Vacuole, Middle Lamella, RER, Nucleus
- D. Nucleus, Nucleous, Golgi Body, Nuclear Envelope, Plasma Membrane, Vacuole, Middle Lamella

Ans. (D)



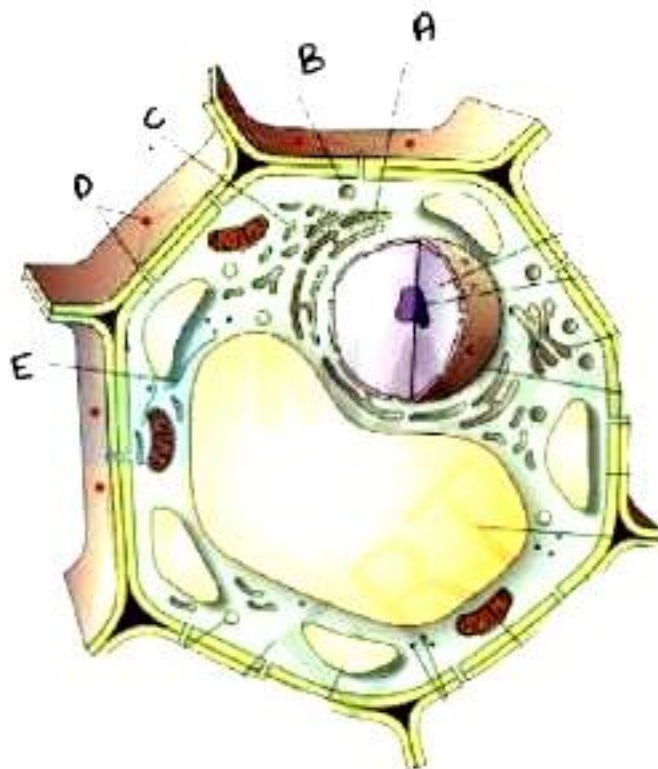
**Q8. Select A, B, C, D, E, F from the following Diagram.**



- A. Ribosome, Cytoplasm, Chloroplast, Peroxisomes, Mitochondria, Cell Wall
- B. Peroxisomes, Cytoplasm, Chloroplast, Ribosomes, Mitochondria, Cell Membrane
- C. Ribosome, Cytoplasm, Chloroplast, Peroxisomes, Mitochondria, Cell Membrane
- D. Peroxisomes, Cytoplasm, Chloroplast, Ribosomes, Mitochondria, Cell Wall

**Ans. (D)**

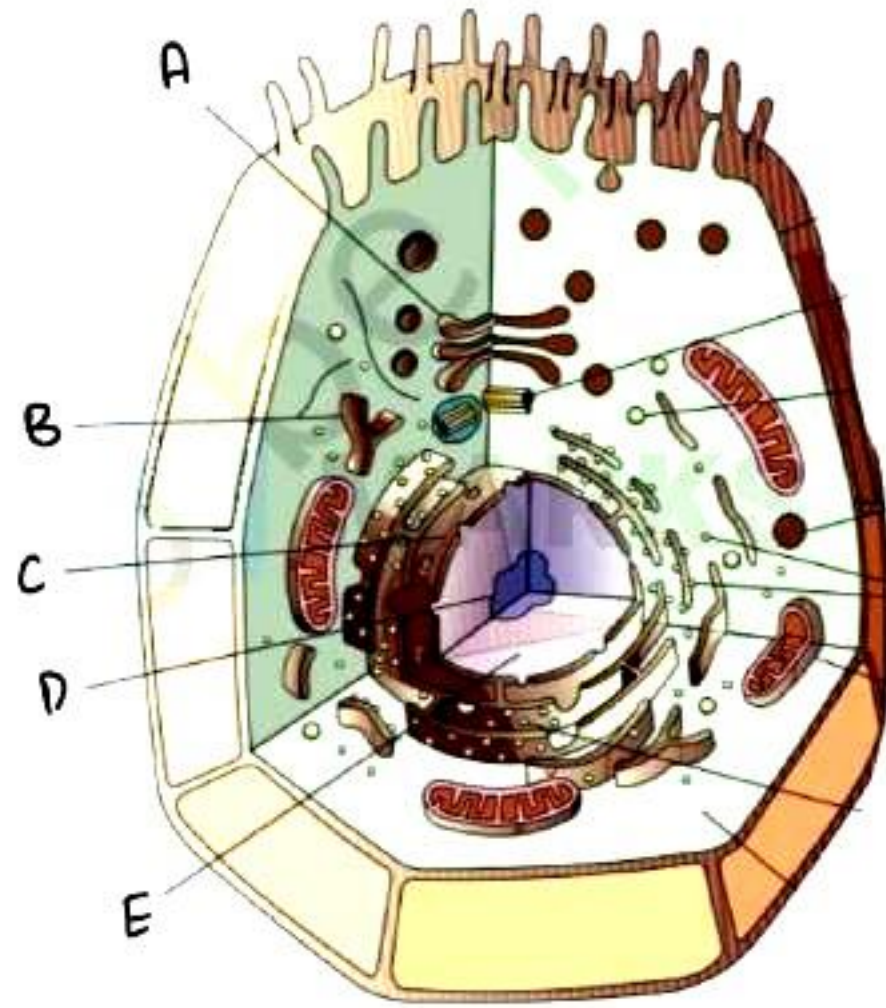
**Q9. Select A, B, C, D, E from the following Diagram.**



- A. RER, Vacuole, SER, Plasmodesmata, Microtubule
- B. RER, Vacuole, SER, Plasmodesmata, Ribosome
- C. RER, Lysosome, SER, Plasmodesmata, Microtubule
- D. RER, Lysosome, SER, Plasmodesmata, Ribosomes

**Ans. (C)**

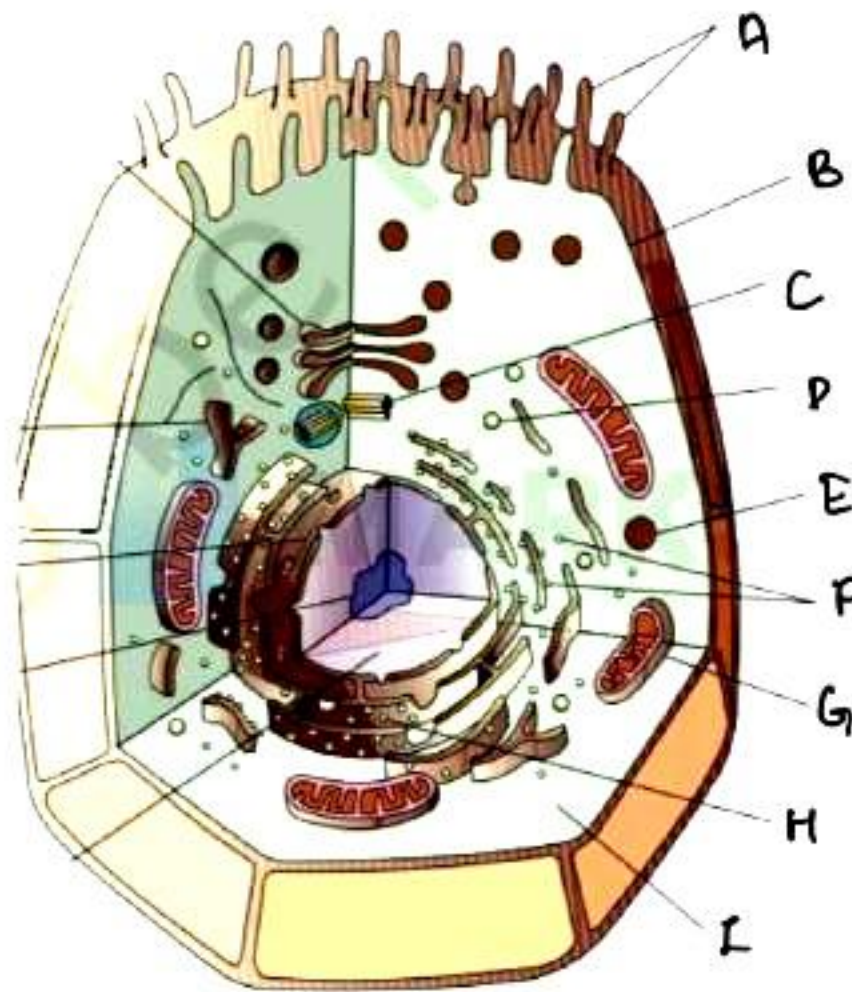
**Q10. Select A, B, C, D, E from the following Diagram.**



- A. Golgi Body, SER, Nuclear Envelope, Nucleolus, Nucleus
- B. Golgi Body, SER, Nuclear Envelope, Nucleus, Nucleolus
- C. Golgi Body, RER, Nuclear Envelope, Nucleus, Nucleolus
- D. Golgi Body, RER, Nuclear Envelope, Nucleolus, Nucleus

**Ans. (B)**

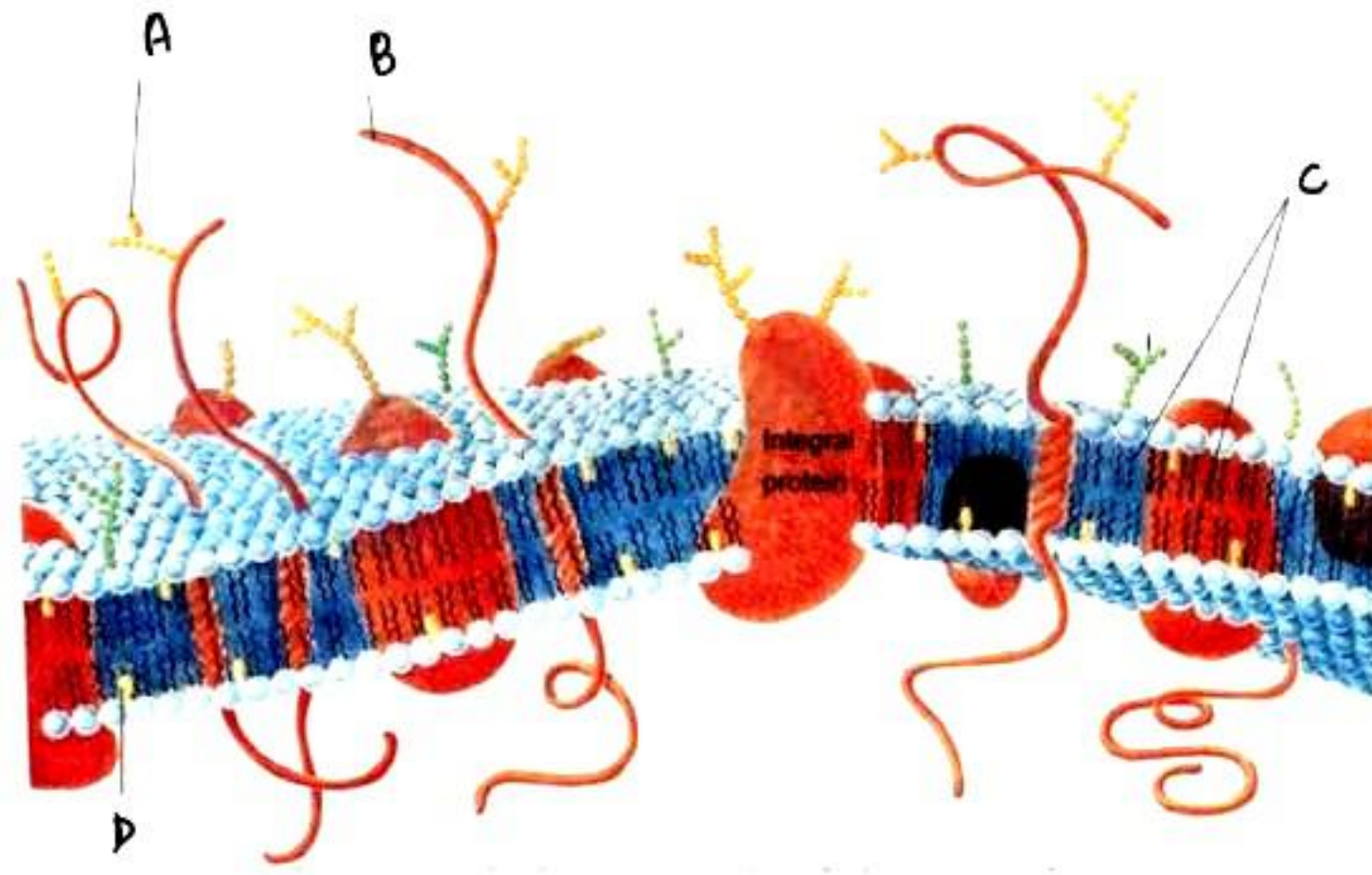
**Q11. Select A, B, C, D, E, F, G, H and I from the following Diagram.**



- A. Microvilli, Plasma Membrane, Centriole, Peroxisome, Lysosome, Ribosomes, Mitochondrion, RER, Cytoplasm
- B. Cilia, Plasma Membrane, Centriole, Peroxisome, Lysosome, Ribosomes, Mitochondrion, RER, Cytoplasm
- C. Microvilli, Plasma Membrane, Plastid, Peroxisome, Lysosome, Ribosomes, Mitochondrion, RER, Cytoplasm
- D. Microvilli, Plasma Membrane, Centriole, Peroxisome, Vacuole, Ribosomes, Mitochondrion, RER, Cytoplasm

**Ans. (A)**

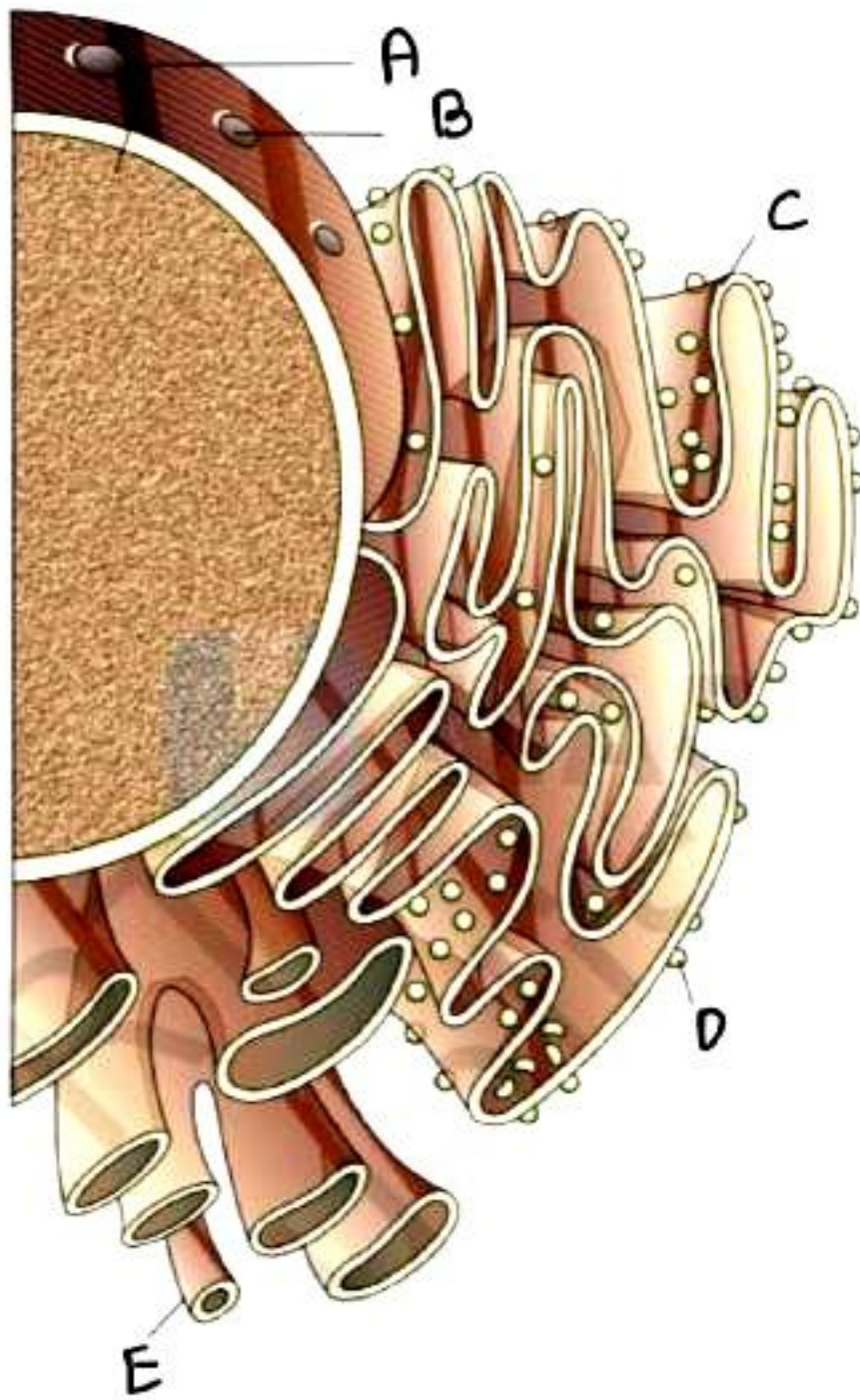
**Q12. Select A, B, C, D from the following Diagram.**



- A. Sugar, Protein, Phospholipid, Cholesterol
- B. Cholesterol, Sugar, Protein, Phospholipid
- C. Phospholipid, Cholesterol, Sugar, Protein
- D. Sugar, DNA, Phospholipid, Cholesterol

**Ans. (A)**

**Q13. Select A, B, C, D, E from the following Diagram.**

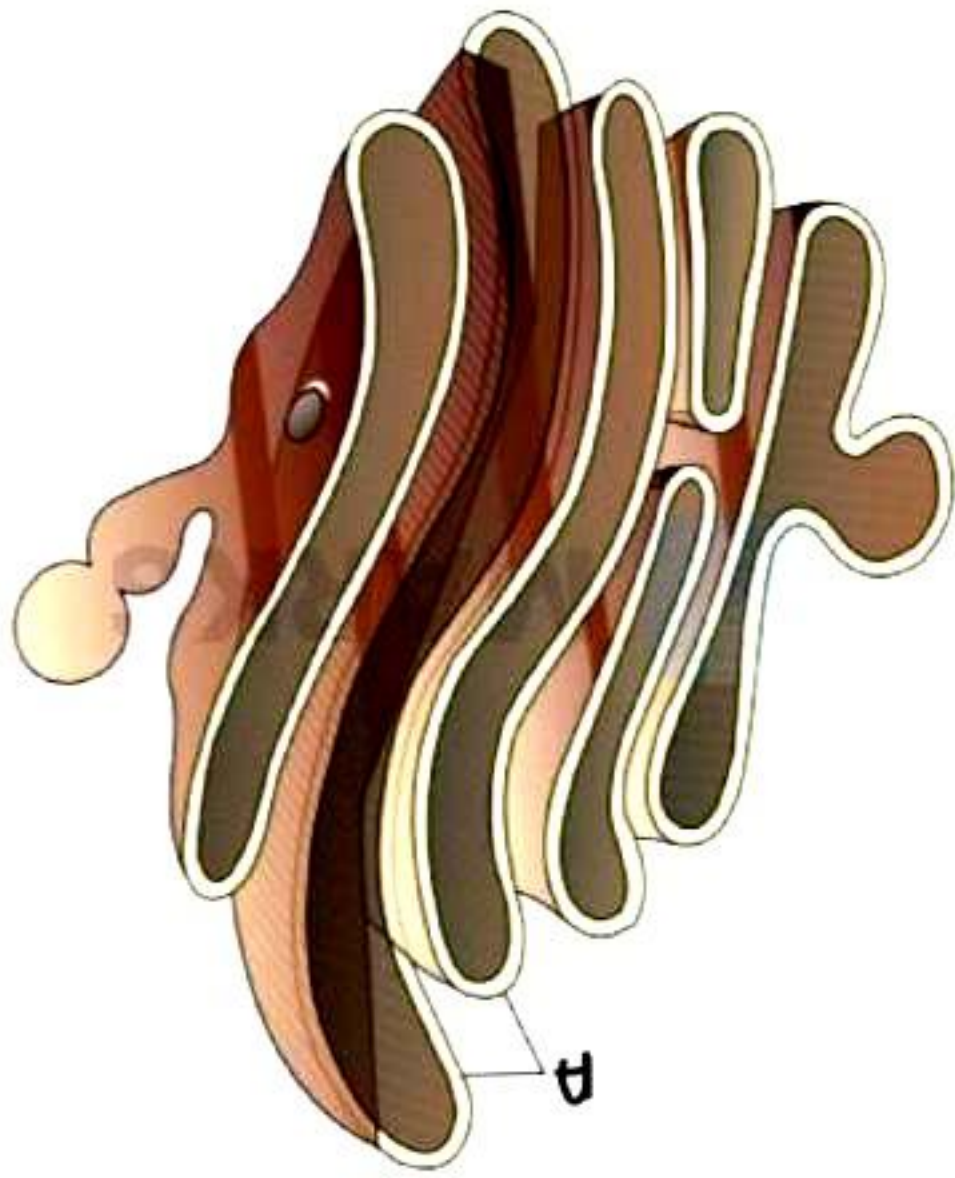


- A. Nucleus, Nuclear Pore, RER, Lysosome, SER
- B. Nucleus, Nuclear Pore, RER, Ribosome, SER
- C. Nucleus, Nuclear Pore, SER, Lysosome, RER
- D. None of the above

**Ans. (B)**



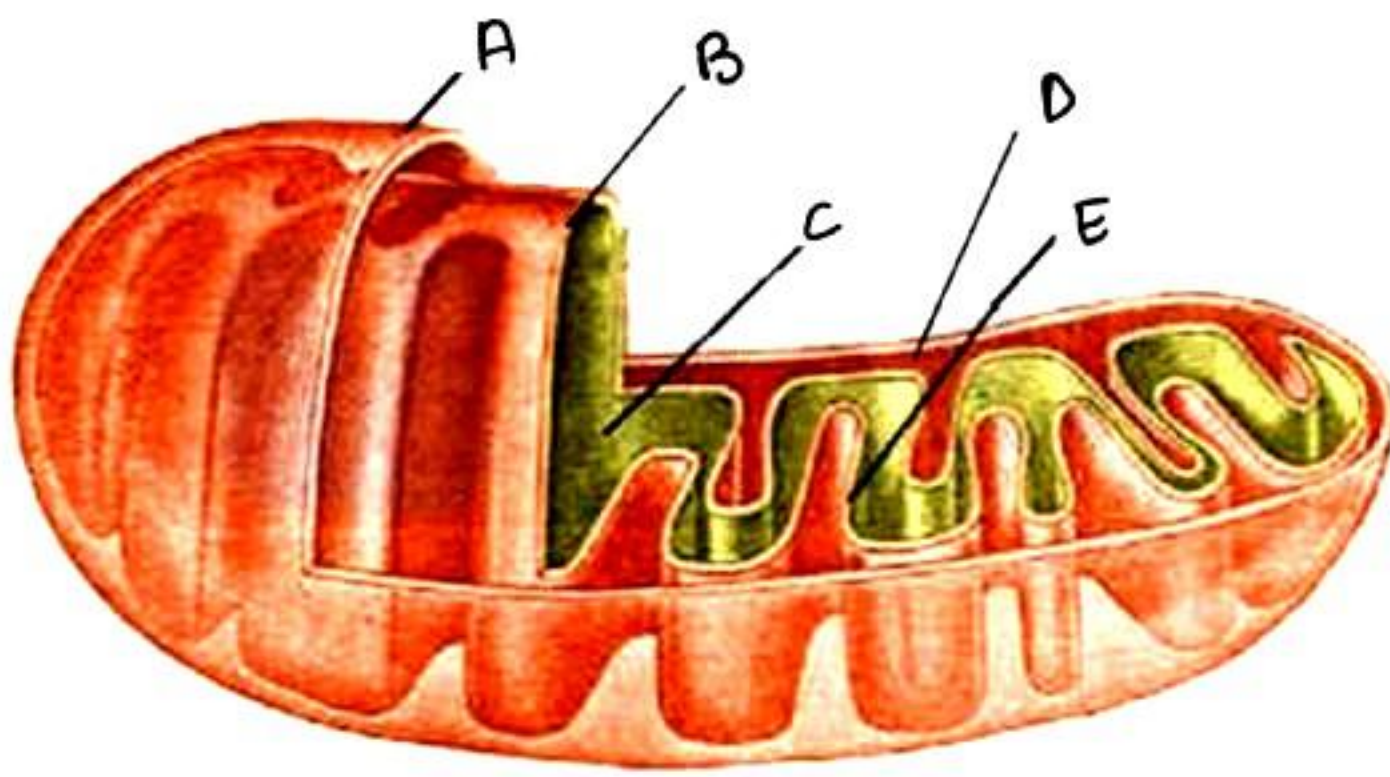
Q14. Select A from the following Diagram.



- A. Cisternae
- B. Vacuole
- C. Vacuoles
- D. ER

Ans. (A)

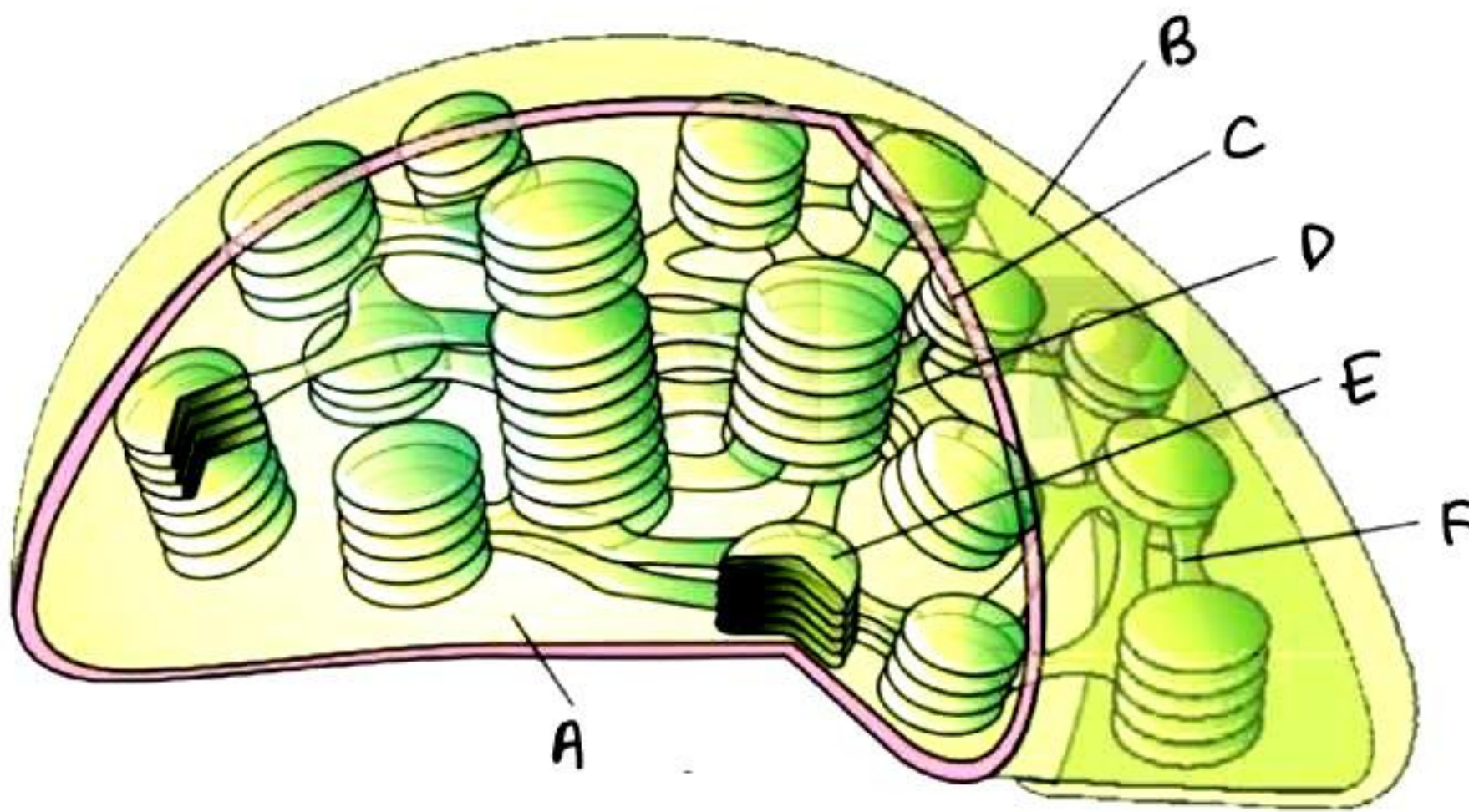
Q15. Select A, B, C, D, E from the following Diagram.



- A. Outer membrane, Inner Membrane, Matrix, Inter membrane space, Cisternae
- B. Inner membrane, Outer Membrane, Matrix, Inter membrane space, Crista
- C. Outer membrane, Inner Membrane, Matrix, Inter membrane space, Crista
- D. Inner membrane, Outer Membrane, Matrix, Inter membrane space, Cisternae

Ans. (C)

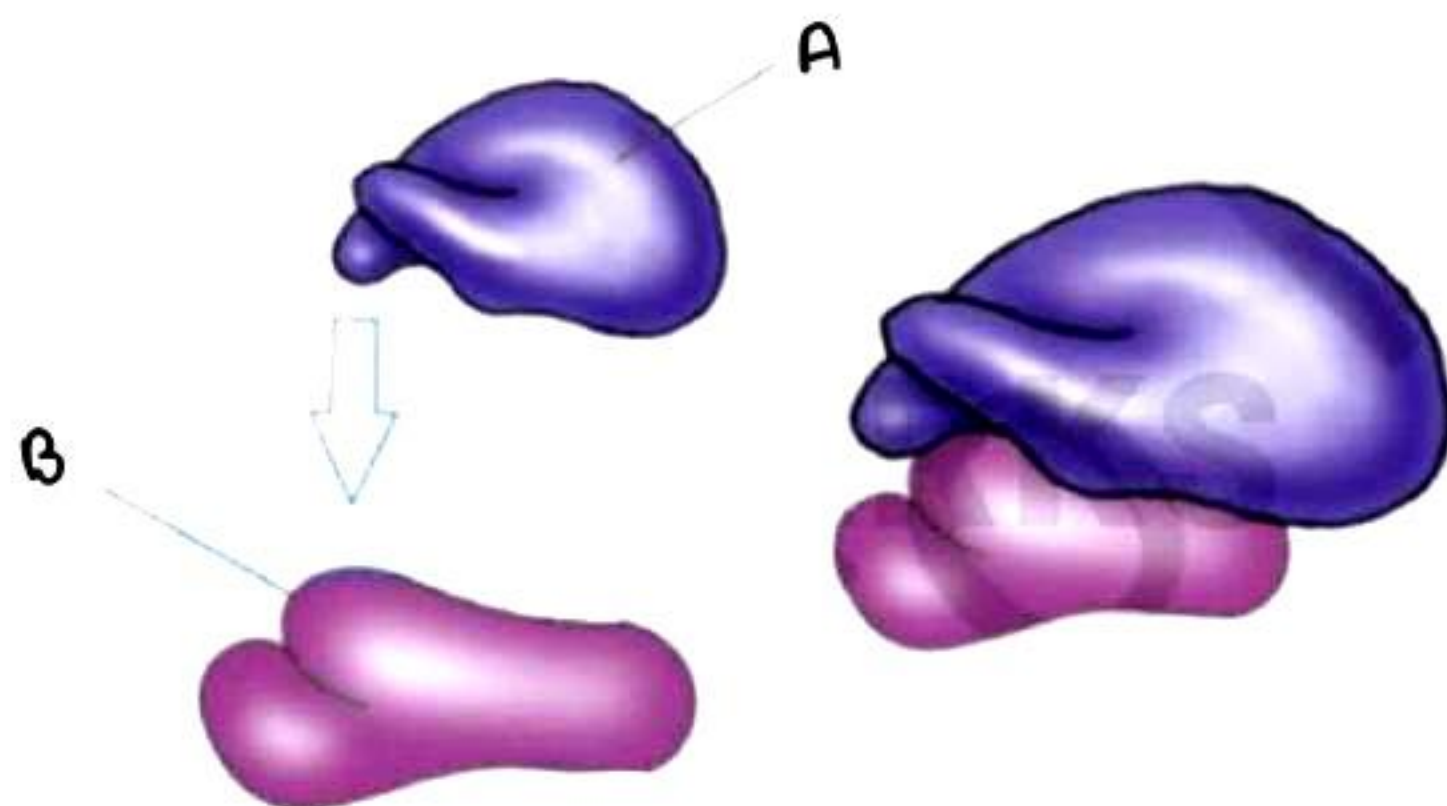
**Q16. Select A, B, C, D, E, F from the following Diagram.**



- A. Thalakoid, Outer membrane, Inner membrane, Garana, Stroma, Stroma lamella
- B. Stroma, Outer membrane, Inner membrane, Garana, Thalakoid, Stroma lamella
- C. Stroma, Inner membrane, Outer membrane, Garana, Thalakoid, Stroma lamella
- D. Thalakoid, Inner membrane, Outer membrane, Garana, Stroma, Stroma lamella

**Ans. (B)**

**Q17. Select A, B from the following Diagram.**

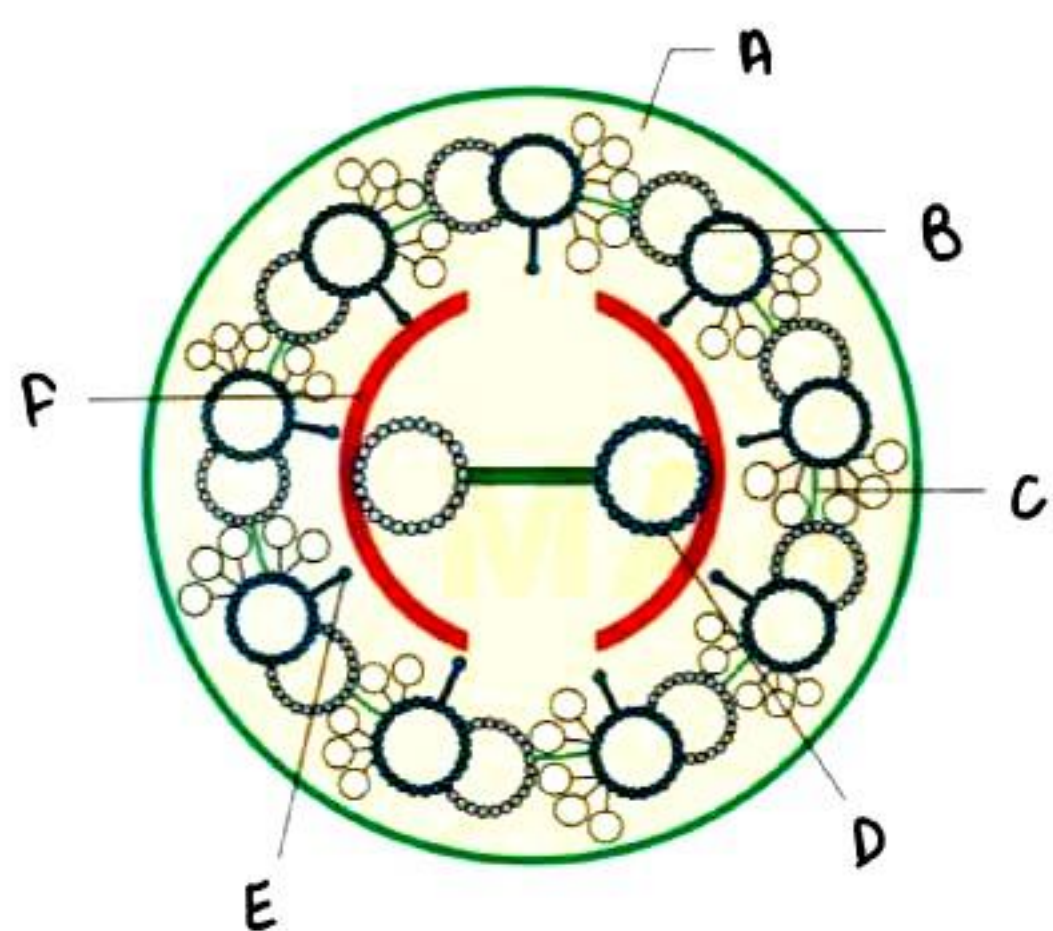


- A. Small Unit, Large subunit
- B. Large Sub unit, small unit
- C. Large sub units, Small Sub unit
- D. None of the above

**Ans. (C)**

**Q18. Select A, B, C, D, E, F from the following Diagram.**

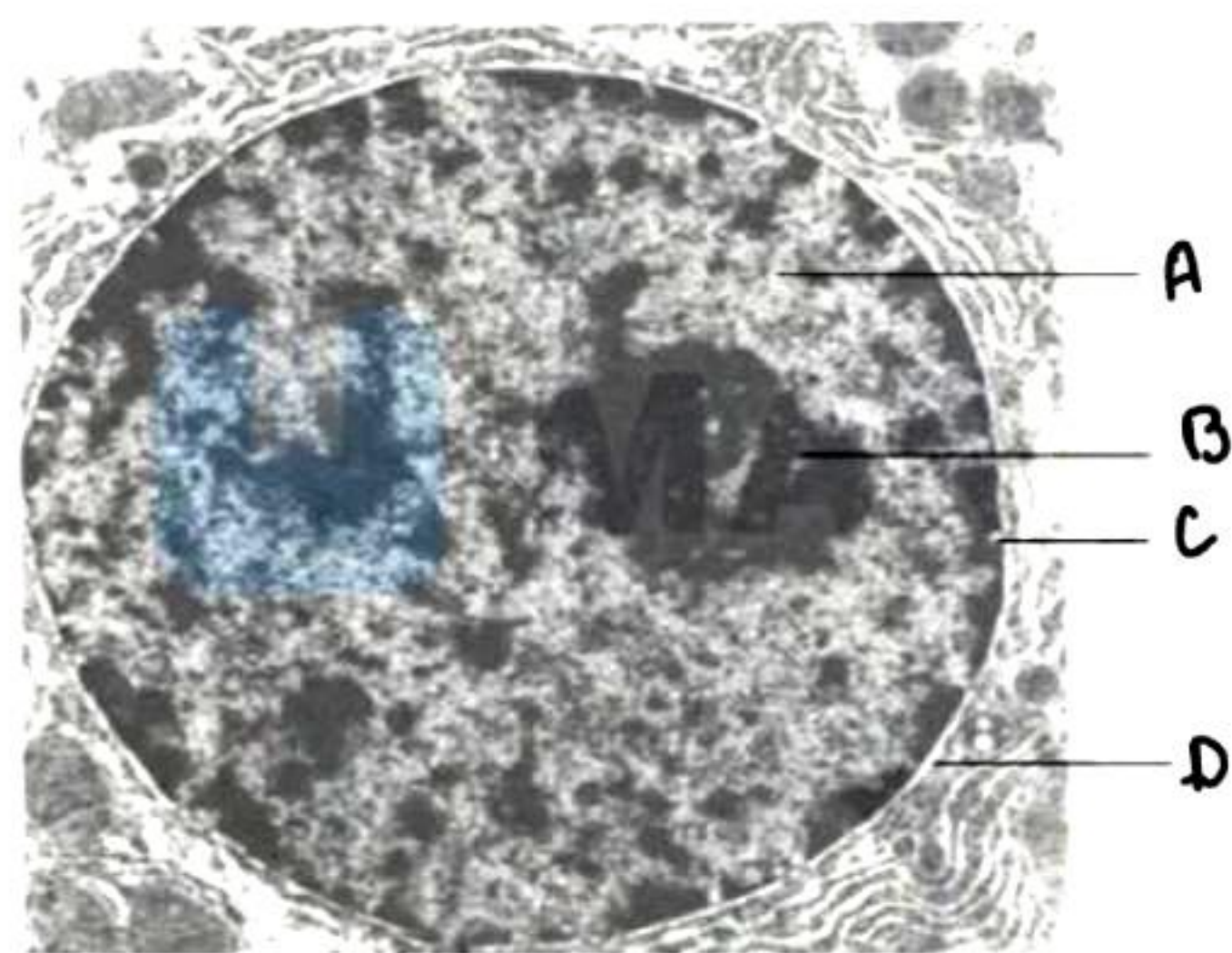




- A. Plasma Membrane, Peripheral Microtubules, Interdoublet Bridge, Central Microtubule, Radial Spoke, Central Sheath
- B. Cell Wall, Peripheral Microtubules, Interdoublet Bridge, Central Microtubule, Radial Spoke, Central Sheath
- C. Plasma Membrane, Peripheral Microtubules, Interdoublet Bridge, Central Microtubule, Peripheral Spoke, Central Sheath
- D. Plasma Membrane, Peripheral Microtubules, Interdoublet Bridge, Central Microtubule, Radial Spoke, Peripheral Sheath

**Ans. (A)**

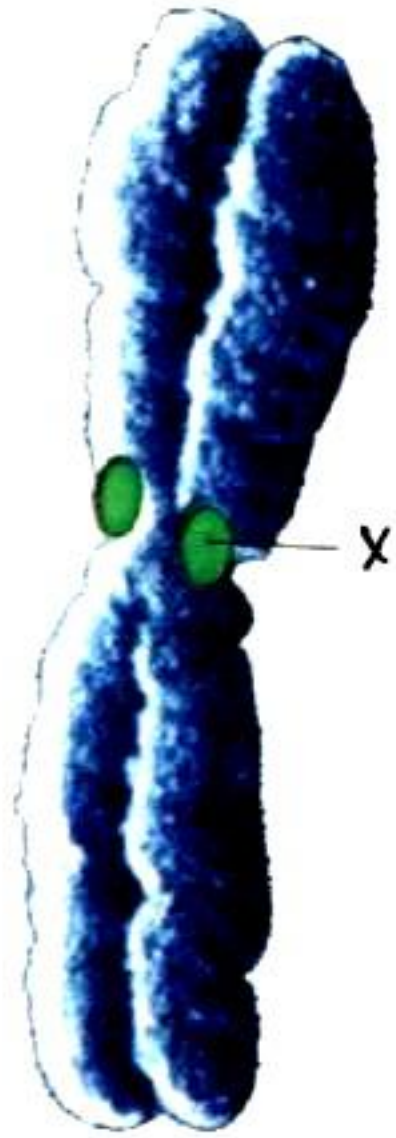
**Q19. Select A, B, C, D from the following Diagram.**



- A. Nucleoplasm, Nucleolus, Pore, Nuclear membrane
- B. Pore, Nucleoplasm, Nucleolus, Nuclear membrane
- C. Nucleoplasm, Nucleolus, Nuclear Pore, Nuclear membrane
- D. Nucleolus, Nuclear Pore, Nuclear membrane, Nucleoplasm

**Ans. (A)**

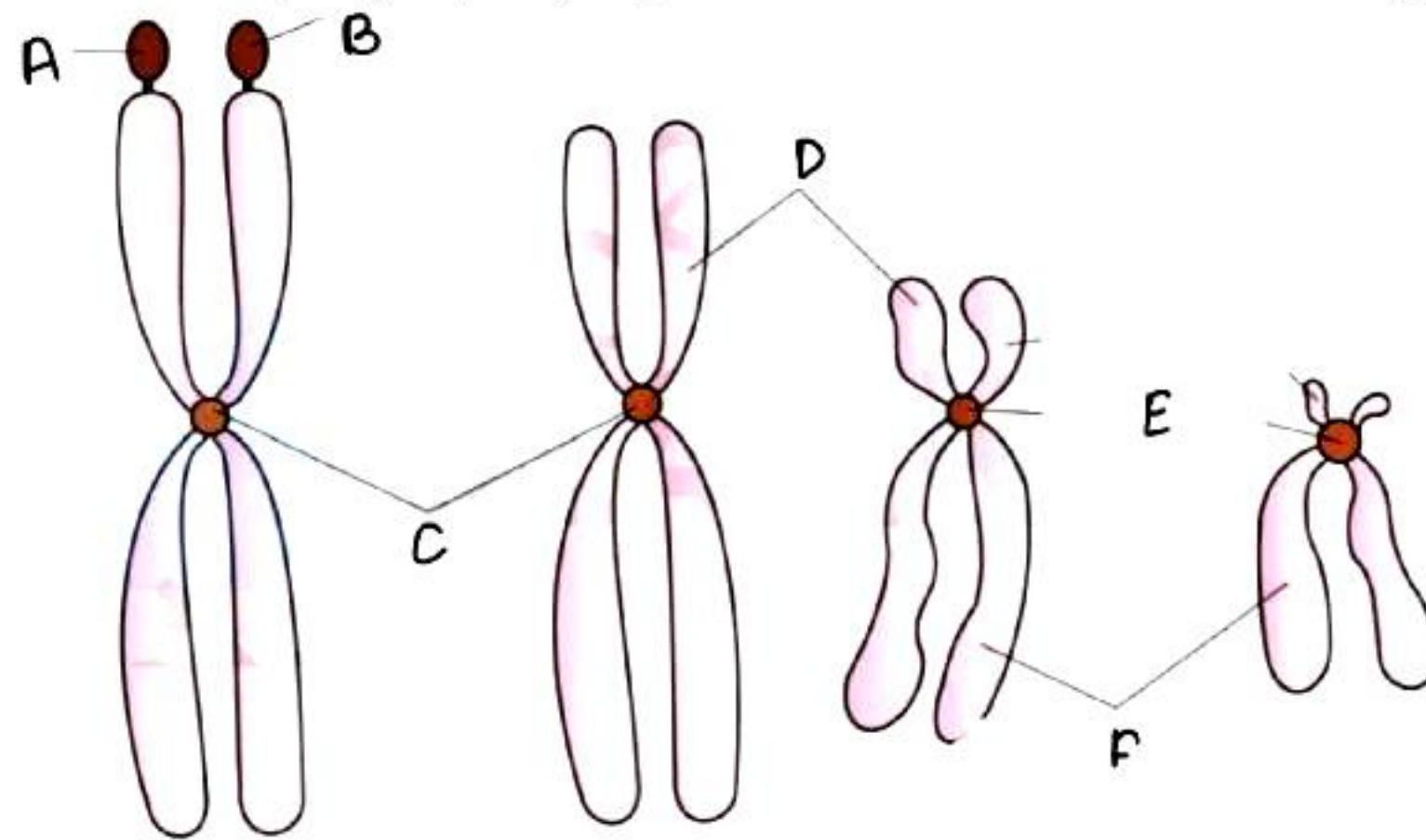
**Q20. Identify X from the following Diagram.**



- A. Kinetochore
- B. Centromere
- C. Centrioles
- D. Satellite

**Ans. (A)**

**Q21. Select A, B, C, D, E, F from the following Diagram.**



- A. Satellite, Secondary Satellite, Short arm, Centromere, Long Arm
- B. Satellite, Secondary Satellite, Long arm, Centromere, Short Arm
- C. Satellite, Secondary Constriction, Short arm, Centromere, Long Arm
- D. Kinetochore, Secondary Satellite, Short arm, Centromere, Long Arm

**Ans. (C)**